

INFO *Equities*



Equity Trading



InfoEquities is an online personal investment manager providing a comprehensive one stop solution for keeping track of your investments

Feature Highlights

- ◆ Live Share Trading
- ◆ Multiple Portfolio Management
- ◆ Reports
- ◆ Bank Account Management
- ◆ Share Charts
- ◆ Company Information





Live Share Trading

Live Trading lets you execute buy and sell orders in real time. You can now view the market prices on your computer Screen.

Market Watch	Add	Delete	Alerts	Options	NIFTY	1605.70	
Symbol	S	ABuy Qty	Buy Price	Sell Price	Sell Qty	Last Price	% Diff
SATYAMCOMP	EQ	4556	2545.00	2547.00	190	2547.00	3.55
PENTSFWARE	EQ	103	1195.00	1195.25	480	1195.00	-0.41
SILVERLINE	EQ	250	648.30	648.00	35	648.30	-7.52
RANBAXY	EQ	1532	930.00	930.70	34	930.00	-1.29
INFOSYSTCH	EQ	9	11786.00	11799.00	60	11799.00	-2.41
RELIANCE	EQ	290	317.10	317.20	3900	317.20	1.72
ROLTA	EQ	582	342.10	342.70	200	342.00	-5.51
DIGITAL EQP	EQ	51	1345.75	1347.50	600	1345.75	-1.50
ZEETELE	EQ	50	1013.05	1013.50	45	1013.50	-0.94
ITC	EQ	100	885.05	885.50	499	885.10	0.61
SBIN	EQ	1000	240.65	240.90	350	241.00	-1.43
L&T	EQ	100	430.70	431.00	146	430.70	-5.30
HCL-HP	EQ	50	623.00	623.70	50	624.90	-4.96
ACC	EQ	500	219.55	219.75	1093	219.75	-2.53
TELCO	EQ	25	238.10	238.45	200	238.45	1.27
MTNL	EQ	60	283.55	283.00	171	284.00	-0.04
TATATEA	EQ	36	543.50	545.45	25	543.50	-2.67
SQRDSFWARE	EQ	325	868.00	871.00	30	871.00	-0.55



Symbol: **INFOSYSTCH**

2 Years 1 Year 3 Months IntraDay

INFOSYS TECHNOLOGIES LTD.	
Date	13 Jan 2000
Previous Close	13,077.55
Open Price	13,100.00
High Price	13,349.00
Low Price	12,031.35
Close Price	12,090.60
Net Traded Value	1,961,474,749
Net Traded Quantity	156,550.00
52 Week High	16,875.25
52 Week Low	2,430.00

Buy	Sell	Trades	Orders	AvgPrice	NetQty	Margin	Log
Symbol	INFOSYSTCH		Book Types:	RL			
Qty	100		Terms:	DAY			
Price	11,787		Good till date:	1 DAY			
Value:	11,78,700		AONMF:				
Brok-Tax	1,178.80		MF Qty:				
Total	11,79,878.80		Disc/Trig Price:				
Margin:			Buy				

Symbol	S	Buy Order	Buy Qty	Buy Price	Sell Price	Sell Qty	Sell Orders
INFOSYSTCH	EQ	1	141	11787.00	11790.00	75	1
INFOSYSTCH	EQ	1	50	11785.00	11789.00	40	1
INFOSYSTCH	EQ	1	25	11781.00	11788.00	477	3
INFOSYSTCH	EQ	5	240	11778.00	11780.00	881	4
INFOSYSTCH	EQ	1	100	11776.00	11779.00	100	1
By Price		Total	58419			103630	

Members of the Exchange are requested to note that trading in the equity shares of the following eight companies under "permitted to trade" category shall be withdrawn with effect from January 13

Sr. No Company Namez



Multiple Portfolio Management

Multiple Portfolios give you a choice to track your share holdings and those of your family separately. Alternatively it allows tracking of shares sector wise for eg.: Software portfolio, Pharma portfolio etc. You can also test your investment ideas by creating hypothetical Watch Portfolios. For each portfolio, 5 predefined views are available to allow quick access to information on your holdings and see the big picture at a glance. The 5 available are Historical, Current, Market, Fundamental and Technical.

Current View

Compare the day's closing price of your shares with previous days closing. Track the change and % change for each of your shares on a day to day basis.

GUEST		Portfolio:	My Portfolio - INR	View:	Current					
Symbol	Series	Shares	Purchase Rate	Purchase Value	Today's Close	PrevClose	Change	Change%	Today's Value	Today's Gain/Loss
TELCO	EQ	50	268.00	13,000.00	267.25	284.05	-16.80	-6.28	13,362.50	-840.00
HDFC	EQ	220	274.31	60,350.00	287.05	288.55	-1.50	-0.52	63,151.00	-338.00
ICICI	EQ	238	80.00	18,400.00	82.35	82.58	-0.15	-0.18	18,340.50	-34.50
IDBI	EQ	100	35.40	3,450.08	44.35	47.85	-3.30	-7.44	4,435.00	-330.00
Total				95,200.000					99,889.00	-1,534.50
Account Balance									92,690.60	



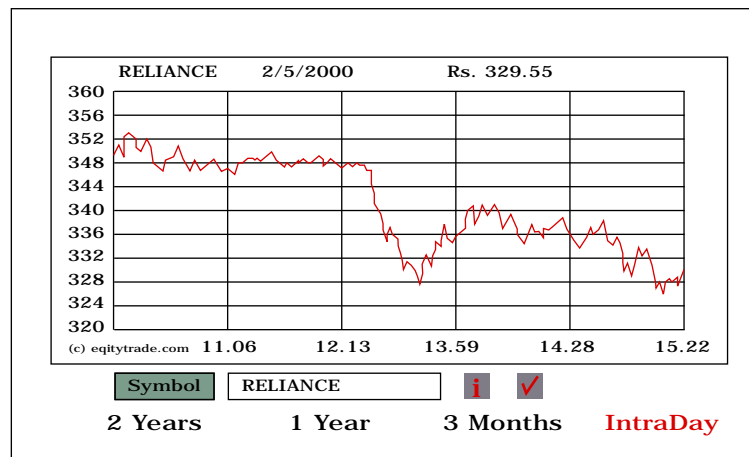
Market View

Get day's closing & Opening price, days high/low and the volumes traded for each of your shares. This view will free you from referring to the financial papers.

GUEST		Portfolio:	My Portfolio - INR			View:	Market		
Symbol	Series	Today's Close	Prev Close	Change	Change%	Open	HIL	Low	Volume
TELCO			284.05	-16.88	-6.26	290.90	292.00	264.10	2,884,920
HDFC			288.55	-1.50	-0.52	295.00	295.90	283.00	64,866
ICICI			82.50	-0.15	-0.18	84.10	84.50	82.00	111,229
IDBI			47.65	-3.30	-7.44	51.50	51.50	43.85	695,365

Your Trading Screen

Market Watch	Add	Delete	Alost	Options	NIFTY	1330.90	
Symbol	S	Buy Qty	Buy Price	Sell Price	Sell Qty	Last Price	% Diff
SBIN	EQ	200	195.00	195.50	1000	195.85	-5.23
L&T	EQ	200	225.20	225.25	220	225.20	-3.92
TELCO	EQ	100	126.25	126.30	32	128.80	-1.33
MTNL	EQ	400	211.85	211.10	715	211.85	-6.07
TATATEA	EQ	216	336.30	338.00	100	336.30	-1.33
ACC	EQ	100	127.50	128.70	230	120.70	-7.97
BEL	EQ	100	69.00	69.15	200	68.80	-11.96
WIPRO	EQ	20	3350.00	3375.00	600	3325.00	-12.00
RELIANCE	EQ	970	327.70	327.00	6177	327.90	-4.97



Buy	Sell	Traders	Orders	AvgPrice	NetQty	Margin	Log
Symbol	RELIANCE	Series	EQ	Book Type	Regular		
Qty	100	Terms:	Day	Good till date	1Day		
Price	328	MF		MF Qty			
Value:	32800	Disc/Trig Price					
Brok+ Tax	34.44						
Total:	32834.44						
Margin							
		BUY		Escape			

MBP	HIGH/LOW	Market Movement	RELIANCE				
Symbol	S	Buy Orders	Buy Qty	Buy Price	Sell Price	Sell Qty	Sell Orders
RELIANCE	EQ	1	510	329.30	329.40	500	1
RELIANCE	EQ	1	5000	329.15	329.50	29944	4
RELIANCE	EQ	1	2020	329.05	329.65	1000	1
RELIANCE	EQ	3	330	329.00	329.70	4405	4
RELIANCE	EQ	2	10100	328.55	329.75	300	1
By Price		Total	158458			467583	



Reports

View your share transactions and profit & loss details for each portfolio in easy to view structured reports. Reports are available for different time periods, which can be selected. InfoEquities reports allow users to see details of share transactions at a glance.

Transaction History

Get complete details of each share transaction. The transaction history report helps you to keep track of date & time, order number and all costs incurred in buying your shares.

GUEST		Portfolio:	My Portfolio - NIR ▼	View:	Transaction History ▼
From Date:	25 OCT 1999	To Date:	27 oct 1999	View:	Date Time ▼

Trade Time	Activity	Order No.	Symbol	Qty	Rate	Brokerage	NSE Tax	Net Rate	Amount
26 OCT 1999 10:30:00	Add Shares	1100111	HDFC	120	270.00	0.23	0.00	270.50	32,460.00
26 OCT 1999 10:30:00	Dividend	0	HDFC	0	0.00	0.00	0.00	0.00	12080.00
26 OCT 1999 10:30:00	Deposits	0	N/A	0	0.00	0.00	0.00	0.00	12,080.50
26 OCT 1999 10:30:00	Dividend	0	ICICI	0	0.00	0.00	0.00	0.00	15,500.00
26 OCT 1999 10:30:00	Deposits	0	N/A	0	0.00	0.00	0.00	0.00	1,500.00



GUEST		Portfolio:	My Portfolio - NIR ▼	View:	Withdrawals ▼
From Date:	31OCT 1999	To Date:	31 OCT 1999	Sort By:	Date Time ▼

Account Balance			75,090.50	
Date	Cheque No.	Payee	Amount	Remarks
02 NOV 1999				
31 OCT 1999	217245	JVPD	1,000.00	Club Charges
31 OCT 1999	Cash	Self	2,800.00	Conveyance

Ledger Report

The Ledger report is your banking statement, giving bank account transaction history along with detailed narration. The deposits, withdrawals & dividends are automatically reflected in the ledger. The report can be viewed for specified time periods.

GUEST		Portfolio:	My Portfolio - NIR ▼	View:	Ledger ▼
From Date:	23 OCT 1999	To Date:	27 NOV 1999	Sort By:	Date Time ▼

Trade Time	Ref. No.	Activity	Symbol	Narrative	Deposits	Withdrawals	Balance
Opening Balance							
23 OCT 1999 11:30:00	1100111	Bought	HDFC	50 @ 279.00	0.00	13,950.00	51,350.00
26 OCT 1999 10:30:00		Dividend	HDFC		12,080.00	0.00	63,430.00
26 OCT 1999 12:30:00	135871	Deposits		InfoBahn Int. -Price Money	15,000.00	0.00	78,430.00
27 OCT 1999 09:30:00	135872	Deposits		Sudhir - Rent Received	1,500.00	0.00	79,930.00
27 OCT 1999 10:45:00		Dividend	ICICI		15,000.00	0.00	92,010.00
Total						40,660.50	13,950.00
Balance							92,010.50

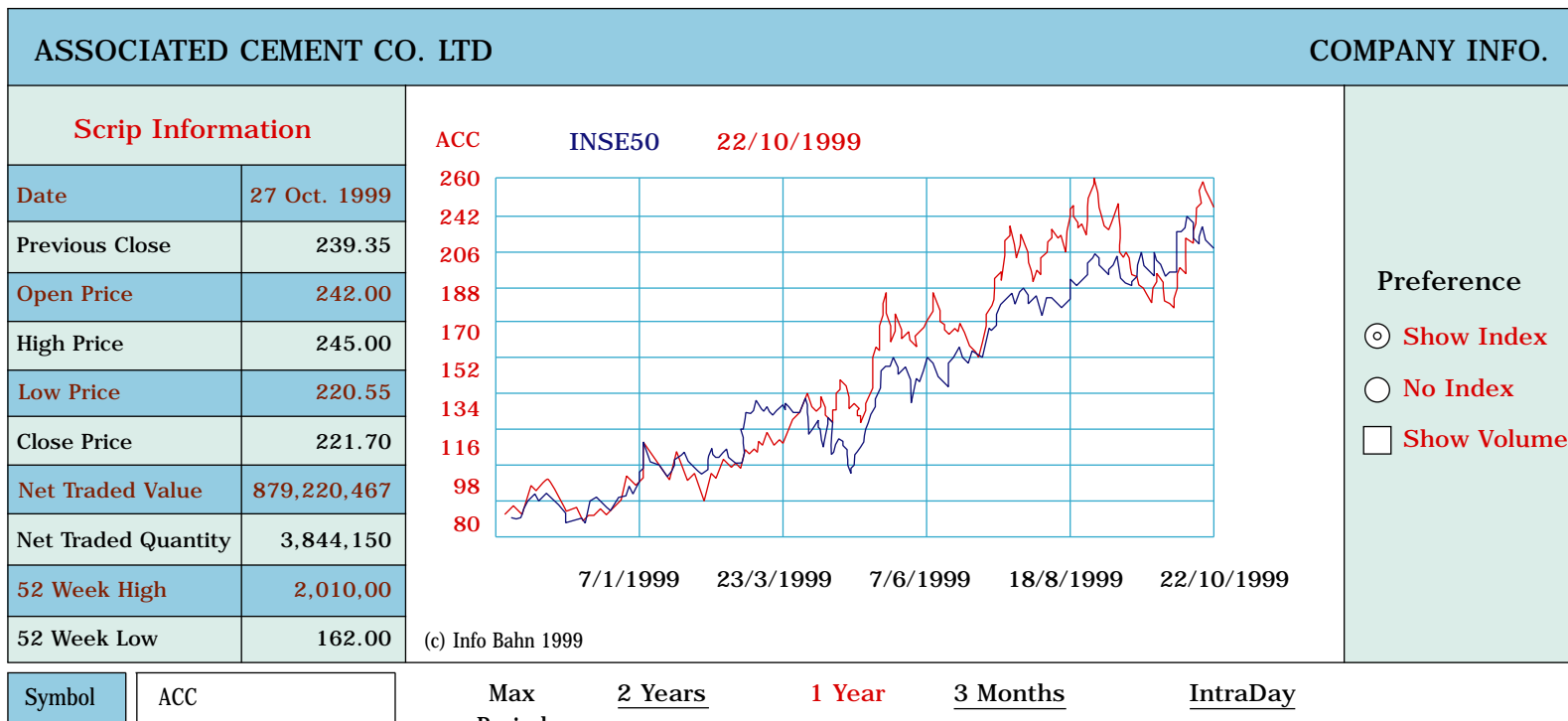


Share Charts

Getting real-time share prices are not enough to make informed buy or sell decisions. You need to follow the price trends of the shares, for a time period. InfoEquities Provides 2 year, 1 year, 3 months and intra-day charts alongwith additional preferences.

Show Index

See the price trend of a particular share along with the NSE 50 index for the same period with the Show Index preference. You can see the price trend of share in isolation by choosing the No Index preference.





Show Volume

The Show Volume preference shows the price trend of your share along with the volumes traded for the same period.

ASSOCIATED CEMENT CO. LTD		COMPANY INFO.	
Scrip Information		<p>ACC 27/10/1999</p> <p>17/8/1999 3/9/1999 24/9/1999 8/10/1999 27/10/1999</p> <p>(c) Info Bahn 1999 Volume (1000's)</p>	
Date	27 Oct. 1999		
Previous Close	239.35		
Open Price	242.00		
High Price	245.00		
Low Price	220.55		
Close Price	221.70		
Net Traded Value	879,220,467		
Net Traded Quantity	3,844,150		
52 Week High	2,010,00		
52 Week Low	162.00		

- Preference**
- Show Index
 - No Index
 - Show Volume

Symbol

Max Period 2 Years 1 Year **3 Months** IntraDay



Intra-day Chart

This chart gives near real-time price movement of your share during NSE market hours.

ASSOCIATED CEMENT CO. LTD		COMPANY INFO.	
Scrip Information		Last 10 Prices	
Date	27 Oct. 1999	15:27	204.00
Previous Close	239.35	15:27	204.00
Open Price	242.00	15:25	204.00
High Price	245.00	15:24	204.00
Low Price	220.55	15:23	204.00
Close Price	221.70	15:22	204.00
Net Traded Value	879,220,467	15:21	204.00
Net Traded Quantity	3,844,150	15:20	204.00
52 Week High	2,010.00	15:19	204.00
52 Week Low	162.00	15:18	204.00
<p>ACC 28/10/1999 Rs.204.</p> <p>(c) Info Bahn 1999</p>			
Symbol	ACC	Max Period	2 Years 1 Year 3 Months IntraDay



Company Information

Audited financial results				
Rs. Crore	Mar 1996 12 mths	Mar 1997 12 mths	Mar 1998 12 mths	Mar 1999 12 mths
Gross Sales	2351.69	2484.66	2408.82	2615.19
Net Sales	1998.03	2110.88	2048.18	2250.18
Other income	35.28	25.34	27.94	27.60
PBDIT (NNRT)	425.56	280.24	191.06	262.99
PBDT (NNRT)	327.47	161.95	71.92	100.54
PBT(NNRT)	262.29	82.60	-13.59	-3.22
PAT (NNRT)	204.39	69.97	-16.31	-11.49
Cash profit (NNRT)	267.57	149.32	69.29	92.72
Operating cash flow	282.18	217.79	74.47	296.50
Gross fixed assets (net of reval)	1667.74	2068.12	2511.20	2624.02
Current assets	910.44	802.51	893.40	849.91
Net worth	942.78	1001.90	956.98	982.41
Equity capital	84.65	136.83	136.83	136.84
Total borrowings	639.56	934.98	1482.85	1437.87
Capital employed	1406.84	1710.94	1904.92	1861.22
Current liabilities & provisions	596.91	500.18	462.07	488.88
Total assets / liabilities (net of reval)	1977.89	2434.51	2937.80	2944.82
Growth (%)				
Gross sales	13.84	5.65	-3.05	8.57
GFA	43.69	11.25	9.38	18.88
Margins (%)				
PBDIT (NNRT)/Sales	18.10	11.28	7.93	10.06
PAT (NNRT)/Sales	8.69	2.82	-0.67	-0.43
Returns ratios (%)				
PAT/Net worth	26.58	7.20	-1.67	-1.18
PBDIT/Capital employed	33.27	17.98	10.57	13.97



Associated Cement Cos. Ltd.

Registered office:

"Cement House"
121, Maharshi Karve Road
Mumbai 400020

Ownership group: ACC Group

Main activity : Cement

Background : The company, popularly known as ACC, was established in 1936 following the amalgamation of several individual cement manufacturing units belonging to the house of Tatas, Khatau, Dinshaw and Killick Nixon. ACC is the largest individual cement company in India and is one of the largest integrated cement companies in the world. It had originally 21 cement and refractory units were disposed off including CATAD plant and special products plant at Porbandar.

Chairman/ Managing director : Chairman Emeritus, N.A. Palkhivala

Interim financial results				
Rs. Crore	Q3 Dec 1998 3 mths	Q4 Mar 1999 3mths	Q1 Jun 1999 3 mths	Q2 Sep 1999 3 mths
Net Sales	633.58	781.88	700.47	627.72
Other Income	53.47	45.43	6.55	24.20
Total Expenses	570.22	758.57	631.69	584.18
PBDIT	107.83	68.74	75.33	6.74
Interest	43.65	39.46	40.11	37.93
PBDT	64.18	29.28	35.22	29.81
Depreciation	26.17	26.53	27.28	27.92
PBT	38.01	2.75	7.94	1.89
Tax	3.99	1.03	0.92	0.22
Net Profit	34.02	1.72	7.02	34.02



Contact

Contact Us

If you'd like to know more about InfoEquities simply call us to arrange for a detailed demonstration and additional information. Call at our office locations or visit our website for the details on our partner near you.

Hong Kong

6th Floor, Landmark East,
12 Ice House Street,
Hong Kong, China

Phone: + (852) 29158419

Fax: + (852) 29158420

India

5th Floor, Business Plaza, Guzdar
Bandh Road, Santacruz, (West),
Mumbai 400 050, India

Phone: +91 (22) 26603025

Fax: +91 (22) 26608961

email: infoequities@infobahnlimited.com

<http://www.infobahnlimited.com>

INFOBAHN

*Excellence in Software
for Financial Services*



Copyright 2001 Infobahn Limited. Microsoft, Windows 2000, Windows NT, SQL Server 7 / 200, Oracle, IBM, DB2, are all trademarks of their respective companies.